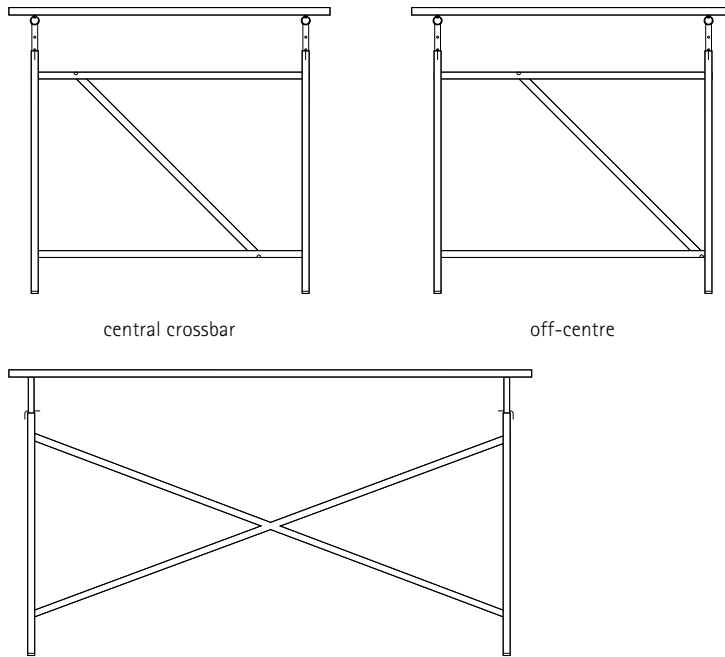


Eiermann 1
Table Frame
 Design: Egon Eiermann, 1953



width mm	height mm	depth mm	RAL colour	chrome plated or bronze-coloured powder coated
			black 9005	
			white 9010	
			silver 9006	
			basalt grey 7012	
			oxide red similar 3009	
			colourless	
1100	660	660	x	x
1100	660	780	x	x

When ordering, please state desired type of crossbars: central (for sitting up straight) or off-centre (for sitting at an angle with outstretched legs).

height adjustment rods, 35 mm hole grid	rubber caps
1 set	1 set
colour	x
chrome	x
bronze	x

For a table height of 720 mm (Euronorm) you will need height adjustment rods. For uneven floors you will need a leveling set. We strongly recommend using rubber caps between frame and tabletop to prevent the tabletop from sliding.

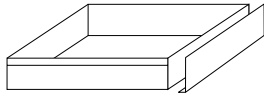
For tabletops longer than 2400 mm, we offer a 1500 mm table frame (depth: 780 mm), with off-centre crossbars in white and grey for x and in chrome for x. With this frame you can only use our solid wood tabletops.

Egon Eiermann originally designed this desk frame for his own use and not for serial production. Therefore sides and cross were welded in one piece. If you want this version, please ask for its price and transport cost.

Frames (but not the tabletops) can be shipped by standard parcel service.

**Eiermann 1
Accessories**

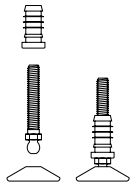
Prices refer to units
needed for one table.



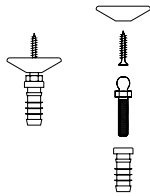
drawer, MDF melamine, white

small 344 × 344 × 45 mm (inside) x
front panel aluminium in frame colours x
front panel chrome plated x

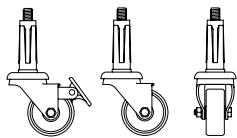
large 460 × 344 × 45 mm (inside) x
front panel aluminium in frame colours x
front panel chrome plated x



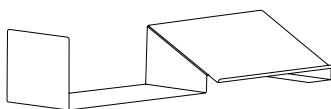
leveling feet
for uneven floors
to adjust table heights
+20 to 40 mm x



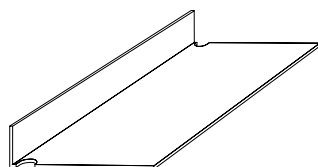
top fixing set
for steeply inclined tops
height + 20 mm x



castors
(set of 4, 2 with brakes)
height + 70 mm
rubber castors x
rubber castors for heavy use x

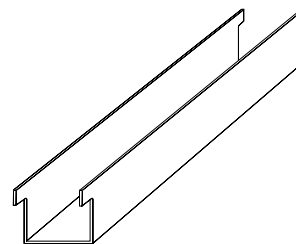


desk
total width 930 mm
book rest width 430 mm
cream RAL 9001 x



CPU-holder
in all table frame colours
except chrome and bronze
780/660 × 220 × 85 mm

x



cable channel
sheet steel
1100 × 120 × 60 mm
all Table Frame colours x
chrome or bronze x

**Eiermann
Tabletops**

chipboard E1 melamine, white coated
with oak edge or white ABS edge 1 mm

chipboard E1 linoleum Forbo 4023 nero, 4181 midnight blue,
4174 conifer, 4164 salsa, 4132 ash, 4175 pebble, each with oak edge,
4023 nero optional with black ABS edge 1mm (delivery time approx. 4 weeks)
opposite face melamine, white

chipboard E1 laminate Fenix 0718 Grigio Londra,
0720 Nero Ingo, edge 1 mm ABS in matching colours
opposite face in matching colours

*solid oak, smoked (end-of-range-model, substituted by natural oak)
satin lacquer finish

5 layer plywood solid spruce/fir
weather-resistant glue (AW 100), oiled

dimensions mm	melamine, white oak edge or white edge 28 mm	linoleum Forbo oak edge or nero/black 30 mm	laminate Fenix 30 mm	solid oak* 33 mm	5 layer plywood oiled 33 mm
1000 × 600	x	x	x		
1200 × 800	x	x			
1400 × 800	x	x			
1600 × 800	x	x	x		
1600 × 830					x
1600 × 900	x	x		x	
1800 × 900	x	x	x	x	
2000 × 900	x	x		x	x

Please note:

You may find small splits at the edges of the underside of our melamine tops. This may also apply to the melamine underside of linoleum tops. The tops can only be used on one side.

Our solid oak tops are smoked. All natural 'blemishes' such as knotholes are filled with black resin. With the 1500 table frame and the Book Table you can only use our solid wood tops.